

Environmental & Animal Welfare Certification (EquuRES Label)



Thematic Area:

Environmental sustainability
- Biodiversity.

Priority: How can biodiversity be improved while maintaining equine activities?

Need: Find solutions to reduce the loss of biodiversity (and/or even increase biodiversity) in equine farms (positive and negative impacts of horses).

Solution EU Number: BD-07.

Content of the Solution:

The EquuRES label is a national quality initiative in France designed to improve environmental sustainability and equine welfare across all equine establishments. It applies to various types of equine farms, racecourses, and events, offering certification through a three-step process: self-assessment, on-site evaluation, and certification. The label ensures compliance with animal welfare standards, environmental regulations, and resource management practices, while promoting good practices in the equine industry.

Key Contacts:

• contact@label-equures.com

Reasons for Implementing this Solution

The EquuRES label promotes environmentally sustainable practices and enhances equine welfare, helping farms stand out in the market while improving resource management and animal care.

Description of Solution Strategies

The EquuRES label is France's national environmental and equine welfare quality initiative, specifically developed for the equine industry. It applies to all French equine establishments, regardless of size or activity. Equine farms certified with the EquuRES label automatically obtain Level 2 of the Environmental Certification of Agricultural Farms by the Ministry of Agriculture. They can also display their membership in the FNC's national charter for equine welfare.

The label includes three versions to meet the specific needs of the equine industry:

- Equine farms.
- Racecourses.
- Equestrian events.

The certification process consists of three stages:

1. An online self-assessment by the applicant.
2. An on-site assessment by an approved assessor, who checks compliance with environmental regulations, animal welfare, and resource usage.
3. Validation of the assessor's report and issuance of the official certification.



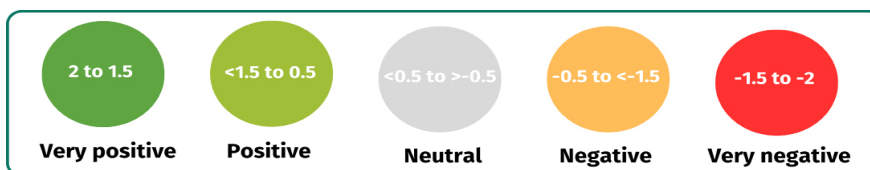
Environmental & Animal Welfare Certification (EquuRES Label)

Implementation Steps

1. Register on the www.label-equures.com website and create a personal account.
2. The applicant checks its eligibility according to the 130 criteria defined by the EquuRES label.
3. Complete and submit the self-diagnosis form online.
4. Sign a membership contract.
5. Host an assessor for an on-site assessment.
6. After successful validation (no non-conformities detected), receive the certification, official plaque, and communication tools. The farm is certified for 3 years.

How Will this Solution Impact the Performance of your Farm ?

TOPIC	SCORE
Social	2.00
Economics	0.50
Welfare	2.00
Health	2.00
Environmental	2.00
Land access and management	2.00
Global	1.75



Color coding explanation



Technical Sheet for Solution Implementation

Environmental & Animal Welfare Certification (EquuRES Label)



Socioeconomics: This solution will strengthen the social performance of your farm by enhancing its public image. Certification improves overall farm performance through better practices and animal care, while also helping to reduce workload. The EquuRES label raises animal welfare and environmental standards, boosting the farm’s reputation and providing valuable visibility at no additional marketing cost. It can lead to higher service fees and offers direct access to investment funding.

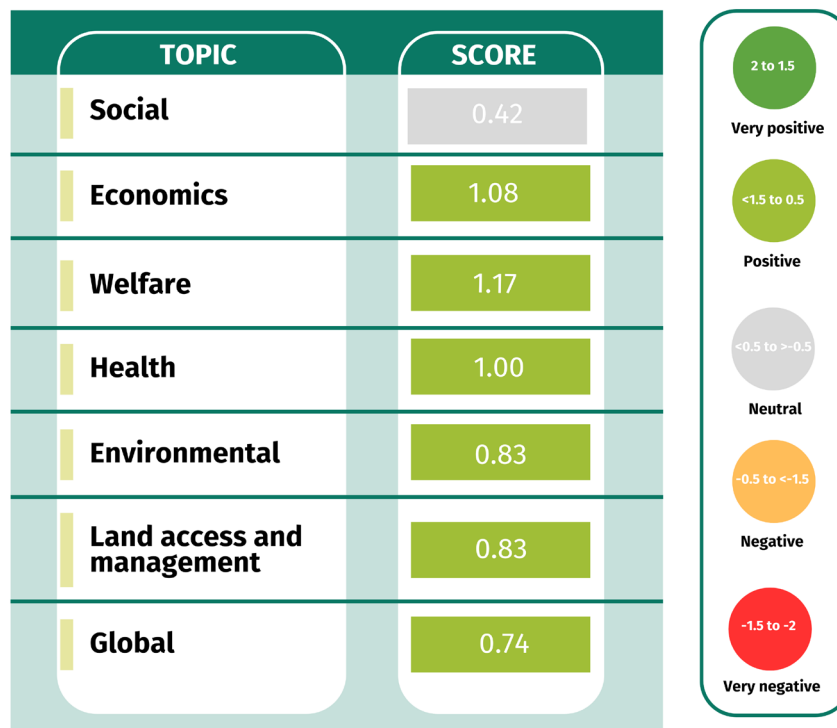


Health & Welfare: This solution is highly effective for improving farm performance by enhancing the health and welfare of horses. The self-assessment diagnosis plays a valuable educational role, helping owners identify areas for improvement. Receiving the certification for a three-year period demonstrates the owner’s commitment to maintaining high standards on the farm throughout that time and beyond.



Environmental Sustainability: This solution effectively enhances farm performance by promoting environmental sustainability, pasture management, and the respect and preservation of biodiversity. The EquuRES label sets clear criteria for the management of natural resources, energy use, waste, and overall ecological impact, helping farms operate more responsibly and sustainably.

How Will this Solution Impact the Resilience of your Farm?





Technical Sheet for Solution Implementation

Environmental & Animal Welfare Certification (EquuRES Label)



Socioeconomics: This solution supports the socioeconomic performance of the farm in the face of external challenges by enhancing its image and visibility through free publicity. While it does not automatically allow for higher service prices, it helps the farm stand out from others and clearly demonstrates that it is committed to responsible and high-standard practices. As a result, the social resilience score remains neutral, reflecting a balance between the positive impact of improved reputation and visibility and the costs associated with certification.



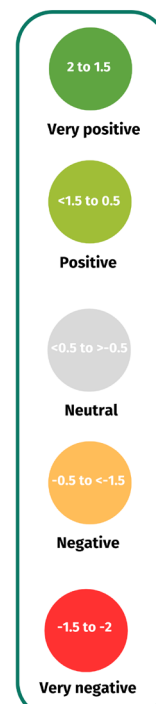
Health & Welfare: This solution strengthens farm performance by ensuring the farm is well-prepared to face health and welfare challenges. By adopting the high standards required by the certification, the farm becomes more resilient to potential problems. When horses' fundamental needs are properly met, this not only improves their overall well-being but can also reduce veterinary expenses, enhance longevity, and support more sustainable herd management over time.



Environmental Sustainability: This solution positively impacts the farm's resilience by strengthening environmental sustainability and grassland management. It promotes the sharing of cost-effective practices that protect natural resources and biodiversity, while providing practical tools to support responsible pasture management, waste reduction, and overall environmental performance.

How Can this Solution Help your Farm Cope with Specific External Challenges to Become More Resilient?

CHALLENGES	SCORE
Inflation	0.83
Pandemic	0.83
High welfare standards	1.33
High infectious diseases	0.75
Extreme weather event	0.50
Loss or limited access to grassland	0.83





Environmental & Animal Welfare Certification (EquuRES Label)



Inflation & Social Crises: This solution will support the global performance of the farm facing inflation and pandemic because certification enhances your image, allows you to raise service prices, provides access to direct funding, and ensures compliance with regulations, guaranteeing resilience against future challenges.



Welfare & Diseases: With this solution the farm is definitively well prepared for all health and welfare challenges. Except for some membership costs, the solution has high educational potential, making the farm owner more aware of the physical and behavioural needs of horses. This certainly will translate into improvement of the health and welfare standards of such a farm in the continuous way.



Climate Change & Access to Land: Additionally, the solution supports resilience in situations of limited or lost access to grassland. Achieving certification requires developing a plan to meet the 3F standards (Freedom, Forage, and Friends) and other criteria, promoting better overall farm management. Beyond these practical benefits, certification allows farms to showcase their positive practices, strengthens their reputation, may support higher service fees, and can facilitate easier access to financing.

Environmental & Animal Welfare Certification (EquuRES Label)

Cost-Benefit Analysis

Costs

Socioeconomics:

- Initial costs of certification.
- Minimum commitment of 3 years as certified farms.
- The cost for membership varies depending on the type of establishment. For a farm, it will vary between €350/year and €500/year, depending on the number of employees.

Health & Welfare:

- No effects.

Environmental Sustainability:

- No effects.

Cooperation between farms:

- No effects.



Benefits

- Image enhancement and recognition.
- Increased service prices, resulting in higher turnover.
- Greater recognition for employees.
- Commercial differentiation, attracting more customers.
- Easier access to funding.
- Reduced water and electricity consumption.
- Respect for the fundamental needs of equidae.
- Improved quality of life for horses.
- Recognition through the national equine welfare charter.
- Stand out from the competition by showcasing commitment to sustainability.
- No effects.



Technical Sheet for Solution Implementation

Environmental & Animal Welfare Certification (EquuRES Label)

Additional Resources

Websites

- <https://www.label-equures.com>

Publication

- <https://equipedia.ifce.fr/economie-et-filiere/organisation/organismes-et-filiere-francaise/le-label-equures>



This project has received funding from the European Union under Grant Agreement No. 101086551.

Views and opinions expressed are however those of the authors only and do not necessarily reflect those of the European Union. Neither the European Union nor the granting authority can be held responsible for them.



Ideas to Ideas to Animate a Workshop about the Solution

- Ask **traders/advisors/companies** specialized in **husbandry, feeding, working conditions, etc.** to join the workshop.
- Find a model farm where the workshop can take place and demonstrate practical application.
- Allow participants to engage in tasks to familiarize themselves with the system through hands-on demonstration.

Proposed Structure for the Workshop on EquuRES Certification in Equine Farms

1. Introduction to EquuRES Certification

- What is **EquuRES**?
- Key features and components of the **EquuRES** certification system (e.g., environmental and animal welfare standards, assessment process).
- Types of **EquuRES** certifications available for different equine facilities (e.g., equine farms, racecourses, equestrian events).

2. Benefits of EquuRES Certification for Equine Farms

- **Improved Environmental Practices:** Ensuring sustainability in farm operations.
- **Recognition for Efforts in Equine Welfare:** Enhancing the reputation of the farm in animal welfare.
- **Increased Customer Base:** Commercial differentiation through certification.
- **Resource Management:** Reduced water, energy consumption, and waste.
- **Cost Savings:** Long-term savings through improved resource efficiency.

3. Practical Applications on Equine Farms

- **Tailored to Farm Size:** Whether a small family farm or a large equine facility, certification is adaptable.
- **Resource Management:** Effective management of water, energy, and waste to reduce operating costs.
- **Animal Welfare:** Improving the well-being of horses through the implementation of sustainable practices.

4. How to Choose the Most Suitable Certification Approach

- **Assessing the Farm's Needs:** Evaluating what's required for your farm to meet the certification criteria.
- **Structural Requirements:** Understanding the physical and logistical changes needed.
- **Price Comparisons:** Analyzing different pricing models based on farm location and size.

5. Hands-On Demonstration

- **Live Demo:** Demonstrate how to assess and implement the EquuRES certification system on-site.
- **Testing Models:** Participants can try different modules of the certification system and ask questions.
- **Best Practices:** Learn effective techniques for increasing operational efficiency.



6. Maintenance and Troubleshooting

- **Module Care:** Learn how to care for certification-related equipment.
- **Re-adjustment:** Ensuring long-term compliance through ongoing assessment and adjustments.

7. Case Studies and Real-World Examples

- **Success Stories:** Discuss how other farms have successfully implemented EquuRES certification.
- **Farm Integration:** How equine centers have incorporated the system into daily operations and the resulting benefits.
- **Lessons Learned:** Insights from farm operators who have been through the certification process.

8. Cost Analysis and Return on Investment (ROI)

- **Initial Costs:** How to calculate the upfront investment for modular systems.
- **Long-Term Savings:** Analyzing the savings in labor, resource use, and energy bills.
- **ROI Calculation:** Learn how ROI varies based on farm size and the intensity of system use.

9. Q&A Session

- **Open Discussion:** Participants can raise specific concerns, challenges, or experiences.
- **Address Uncertainties:** Clear up any doubts regarding the effectiveness or cost of certification.

10. Wrap-Up and Resources

- **Summary:** Key points covered in the workshop, including the benefits of EquuRES certification and how to implement it.
- **Additional Resources:** Provide websites, suppliers, and online communities for further learning.
- **Access to Special Offers:** Information on how to access discounts or special deals when partnering with suppliers.